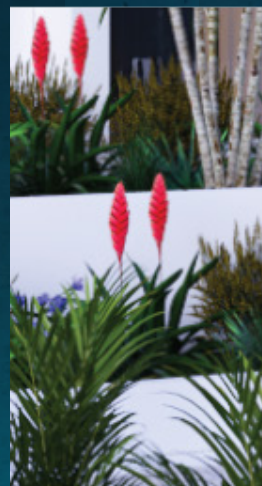




# Company Profile

We Design &  
Build your  
MEP Systems .

We take a  
closer look!



+ 250 788 303 997  
certitude@cert-eng.com  
www.cert-eng.com  
KG 8 Ave, Plot 83, Bukinanyana, Gasabo, Kigali

# TABLE OF CONTENTS

About us .....	3
Mission & Vission .....	3
Our Journey .....	4
Our Services .....	5
Why Certitude .....	8
Our Projects .....	11
Our team .....	26
Our Partners .....	31





# WE'RE CERTITUDE ENGINEERING YOUR WELL-ROUNDED MEP SOLUTIONS

## About Us

We connect expertise in Mechanical, Electrical and Plumbing works, to engineer, design, supervise and install MEP systems that bring buildings to life and create a delightful environment for occupants and efficient with resources, since 2017.

Our vast experience are reflected in every project we've undertaken.

Certitude Engineering work success stems from its dedication to providing clients with engineering solutions tailored to their specific need, driven by Certitude proven expertise and cost-effectiveness.

Certitude has an in-house technical team offering round-the-clock services to ensure that our clients are satisfied from project inception until its final completion.

Whether it's a commercial or mission-critical facility, we meet the creative and commercial demands of clients. Our comprehensive services include **HVAC, Fire and Safety, Electrical, and Plumbing works, Energy audits, Reporting and Certification and Facilities management.**

We offer additional expertise with LEED standard, GREEN MARK, EDGE and RwGBO accredited professionals to bring the best solutions to your challenges.



### Our Vision

To position CERTITUDE Engineering as the leading provider of MEP engineering services that meet customer expectations and pass professional standards



### Our Mission

To provide an advanced smart and green Mechanical, Electrical and Plumbing engineering services (MEP) tailored with clients need and excellent quality, driven by passion, expertise and team work.

# Our Journey





# Our Services



## MEP Design and Supervision.

We know a detailed and tailored building services MEP (Mechanical, Electrical, plumbing) design is key to a successful construction project.

The CERTITUDE design department handles the most complex projects and produces highly sustainable yet cost-effective solutions.

CERTITUDE Engineering understands that building service design is a key component of the construction supply-chain.



## MEP Construction

### Mechanical

Whether it's your climate control or reliable protection systems.

CERTITUDE Engineering installs these systems with one purpose: To create a delightful and safe environment for the public welfare.

#### HVAC works

- Ventilation and air filtration systems
- Chilled water systems
- DX / VRV systems

- Package units | Extract fans
- Fresh Air Handling Units Ecology Units and Make up Air Handling Units
- CCU | GI and PI Ducting

#### Fire and Safety works

- Fire suppression systems
- Fire extinguishers
- Fire hose reels
- Fire hydrant systems
- Automatic sprinkler systems
- Dry and wet riser
- Pumps

### Electrical

We know how much you depend on energy. Certitude Engineer low voltage and Emergency power system to ensure power is there when you need it. Our expertise touches electrical and low current systems.

#### Electrical works

- Grounding
- Main distribution boards (MDB) Secondary main distribution boards (SMDB)
- Final distribution boards (FDB)
- Cabling | Lighting fixtures
- Sockets | Generators

#### Low current works

- UPS
- Data and communication
- Fire alarm
- Audio Visual
- Lighting Control System
- Access control
- Queue management system
- BMS (building management system)
- Video and Audio intercom system

### Plumbing

Every plumbing system we install is equipped with well sized and securely connected systems for the proper distribution and evacuation of water.

#### Plumbing works

- Sanitary and drainage systems
- Water distribution
- Water treatment
- Variable and fixed speed pumping systems
- Solar Heaters
- Kitchen and laundry plumbing
- Irrigation systems and controls
- Sand traps and grease traps.



## **Facilities Management.**

You need a partner who will support your Facilities and Estates Teams, providing you with a tailored solution that will give you peace of mind with cost-effective maintenance.

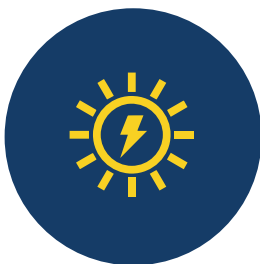
We offer a full range of services, integrated in a flat management structure that is highly responsive to our client requirements.



## **Green Building consultancy**

We are specialized in supporting projects in achieving certification according to not only LEED standard, but also GREEN MARK, EDGE, RwGBO standards for sustainable buildings and sees these standards as a basis for "sustainable design".

We provide an extensive, green, economic and holistic perspective beyond the standardization framework.



## **Energy audit, Reporting and certification**

Whether it's an inspection survey or analysis of energy flows for energy conservation in a building; process or system to reduce the amount of energy input into the system without negatively affecting the output.

We help you streamline your property's energy consumption allowing you to be more energy-efficient and eco-friendly,

we are covering building occupancy, operations, maintenance, and code compliance.

We aim to provide our clients with detailed survey results, risk mitigation analysis, implementation plans, and a final investment-grade analysis







# WHY CERTITUDE?

To deliver highly integrated MEP systems require a clear thinking and deep knowledge of the relationship between the clients' mission, people and environments. Certitude understands that.

Top notch MEP services and a happy client, that's all that matters.



# 01

We connect our expertise to deliver unparalleled MEP systems that bring buildings to life and create a delightful environment for occupants and efficient with resources.

# 02

Whether your project is commercial or mission-critical, we meet your creative and commercial demands on time.

## What Our Clients Say

We consider the most important part of any project to be integrity of different building components. That is why we engaged Certitude on the MEP service for we have the utmost confidence in their engineering capabilities”

**Mohammed Samir - Project Manager / Rwanco Engineering**

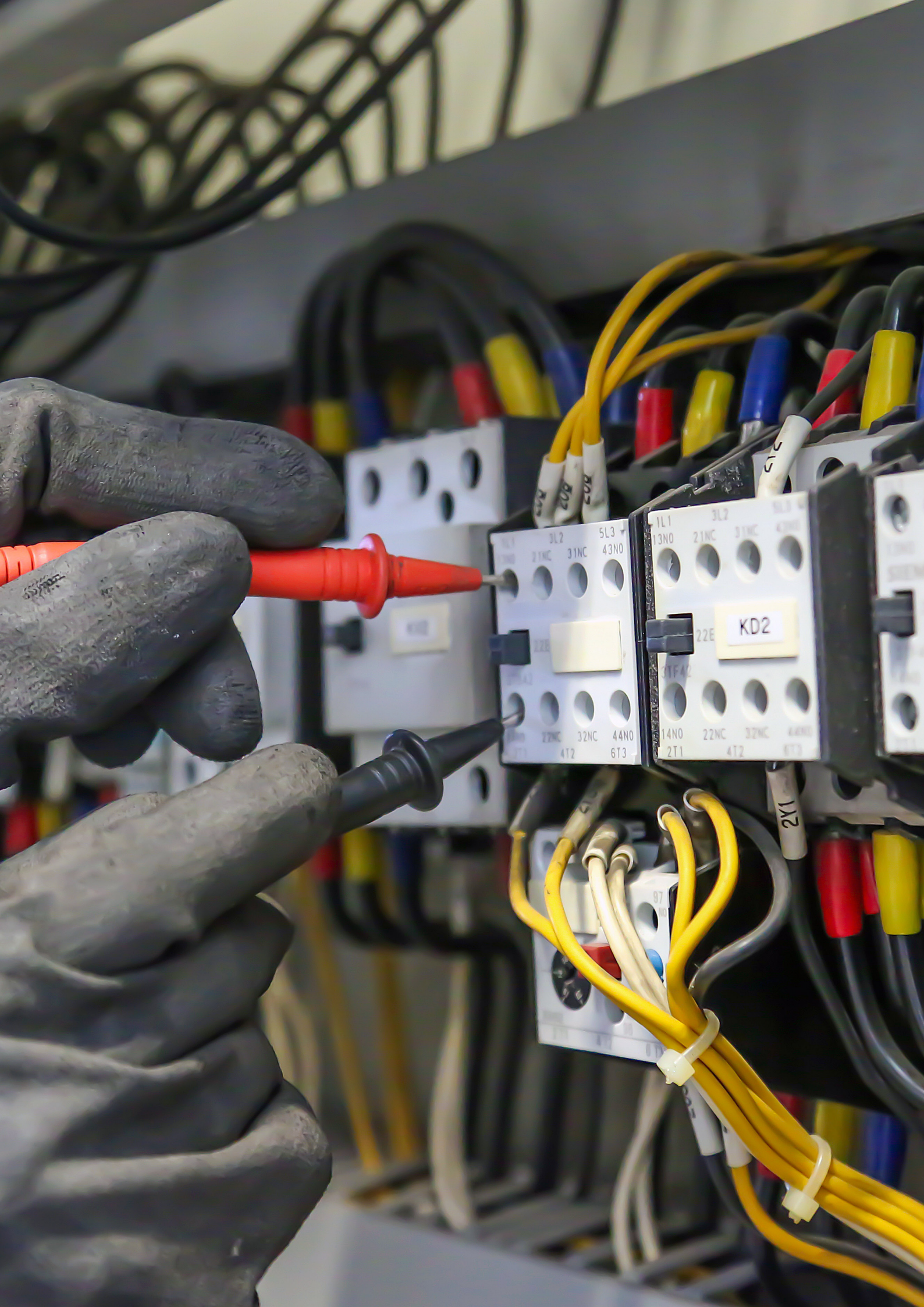
From the start of this project we knew it would be a complex project and with time changes in civil works through the project makes the complexities grew. Certitude was recommended to us as MEP services provider and from the time we introduce the project to them , their attention to details and understanding the status quo of the project was very impressive . God bless them- I take genuine pleasure to recommend them to anyone who has a need for MEP services

**Gakwandi John - Managing Director / Solace Ministry**

Having worked with different companies , I am proud to say these young men really stood their head above the rest we have worked with before - especially their timeliness has been invaluable to us meeting our project tighten schedules

**KOYA J. Rufali - Operations Manager / Strawtec building solution**







# Our Projects

01

## Touch Africa Residence

Touch Africa residence has 44 units in its 8 storeys. It provides luxurious and comfortable accommodations for Kigali city's ever growing demographic. The concept we established while working on the electrical systems designs of this building; We introduced the KNX building information system, one of the recent technology in Building Management System (BMS).

We wanted the building to achieve the maximum security and safety of the property as well as the environmental protection. This green building in the city uses solar energy to power to power itself.





02

## Butaro Hospital Expansion and Remodeling



### Scope of work

MEP Design ( Fire and safety  
works, HVac, Plumbing, Medical  
Gaz, Electrical and Low current)



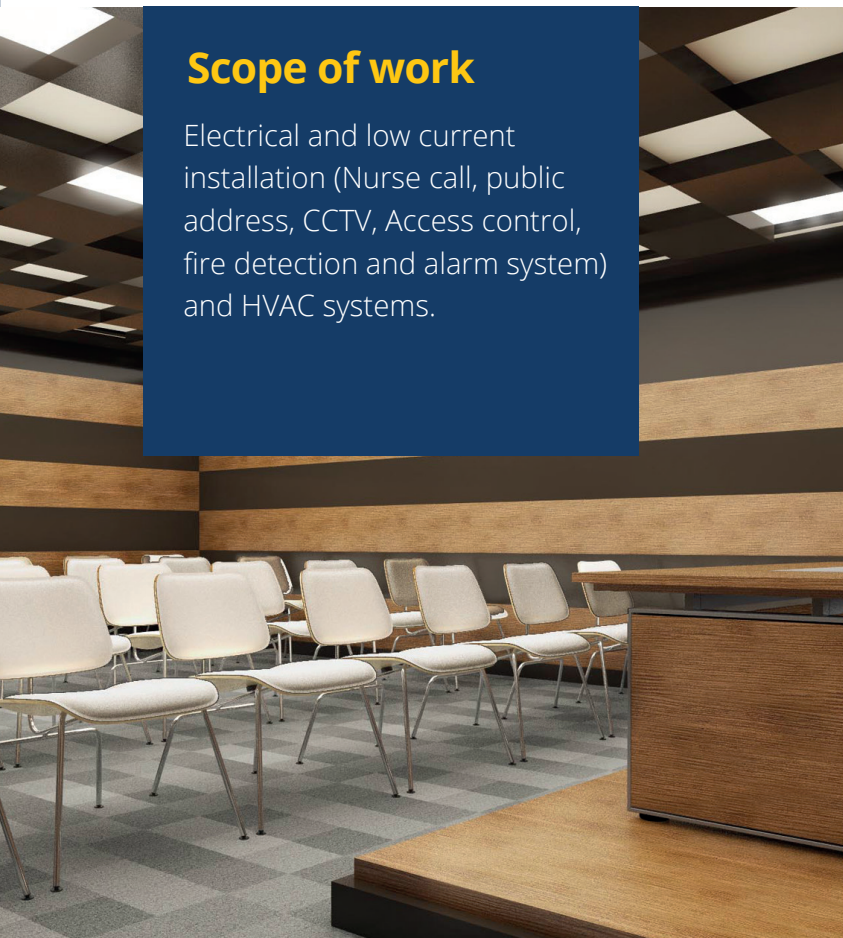
# 03

## Legacy Hospital



### Scope of work

Electrical and low current installation (Nurse call, public address, CCTV, Access control, fire detection and alarm system) and HVAC systems.







04

## Solace Clinic

### Scope of work

Electrical system installation

HVAC systems

Plumbing works

Fire and safety system (Nurse call, public address, CCTV, Access control, fire detection and alarm system)

05

## Century Park Apartment

### Scope of work

SUB Main Distribution

Board dressing

Electrical LV Switchboard termination







06

## Gacuriro apartment and Villa

### Scope of work

MEP design and Construction  
(Fire and safety system, fire fighting  
system, Electrical works and Low  
current, Plumbing works).





07

## Kacyiru apartment



### Scope of work

MEP design  
(Fire and safety system,  
fire fighting system,  
Electrical works and Low  
current, Plumbing  
works).



07

## FIFA Rwanda office



### Scope of work

MEP Design( Fire and  
safety works, HVAC,  
Plumbing,

Electrical and Low  
current).





# 08

## God is Good Plaza

### Scope of work

MEP design  
(Fire and safety system,  
fire fighting system,  
Electrical works and  
Low current,  
Plumbing works).





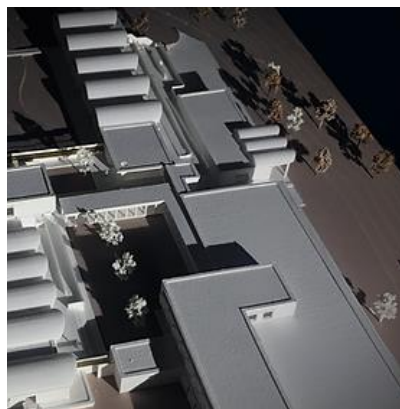
# Rwanda Heart Center

09



## Scope of work

Earthing and  
Lightning Design







09

## JMG wood Factory

### Scope of work

Electrical and low current Design  
Electrical systems Installations  
Low current systems installation



10

## SAWA Citi Muhima branch



### Scope of work:

Electrical design and installation

20



# 11

## Rwanda Motor industrial facilities

Situated in the ultra-modern industrial park located in Gahanga, Rwanda motor industrial facilities is a state-of-the-art car warehouse. Electrically powered with 140 Kw, worth 80m RWFS, the warehouse has the capacity to accommodate four commercial trucks, and eight passenger vehicles.

In compliance with REMA standards regarding industries, Certitude Engineering designed concepts for the warehouse's oil handling systems, firefighting systems and its pump and piping calculations.

We also drew the electrical plans and mechanical drawings. the skills of our electrical engineers contributed in designing the predictable transformer and switchgear sizing with their rated load, with safety, security and energy saving in mind.







12

## Gisagara District Headquarter

Certitude Engineering developed a design concept for the building that includes firefighting systems, electrical power distribution, low current systems, plumbing systems and wastewater treatment plant design.

These systems were designed to efficiently reduce emission of  $CO_2$  while being easily usable and optimizing safety of the property, by the use of modern softwares like AutoCAD electrical and Revit.



# 13

## Phoenix Apartment



### Scope of work

Electrical compliance  
assessment report





# OTHER PROJECTS WE **WORKED** **ON**

## ✓ **Gabiro seed processing facilities**

### **Scope of work**

Electrical and Low current  
Installation

## ✓ **Minecofin Archives Building**

### **Scope of work**

Electrical installation

## ✓ **Kigali Parents School**

### **Scope of work**

Fire fighting design & supervision

## ✓ **Supreme Court – Rwanda**

### **Scope of work**

Electrical and low current  
installation / partitioning









# The Team



**Eng. Joseph Byukusenge** is the Managing Director and Co-founder of Certitude Engineering.

He is a Member of different engineering bodies namely WFEO-EC, FAEO-YC, and a Member of the Governing Council of Institute of Engineers in Rwanda (IER).

Eng. Joseph is a professional Engineer with a degree in electrical engineering from the University of Rwanda.

**"Certitude Engineering** solely concentrates on the design, installation, and supervision of MEP Engineering services that meet customer needs and pass professional standards in Rwanda and internationally through extensive expertise.

An important component of our vision is to position ourselves as the leading provider of MEP services in Rwanda"





### **Eng. Jean Modeste Ntawiheba**

Technical Manager

***“The job isn’t just to fix the problem; it is also to restore the customer’s confidence”***

We all make mistakes, but what sets us apart is our commitment to making things right. Falling short? Don’t just aim to fix the problem and move on. Take it as an opportunity to exceed expectations and restore trust. So let’s commit to putting our best foot forward, because every interaction is a chance to make someone’s day a little brighter.



### **Eng. Jean De Dieu ISHIMWE**

General Manager

***“If you ask yourself “what if I stumble?” Also be sure to ask yourself “what if I achieve greatness?”***

Deep within, we often have a sense of what we want in life. What sets us apart is the power of positivity, discipline, and self-drive. Once this realization dawns, each moment presents an opportunity for the real transformation you need. No one said this is an easy path. Nothing is as simple as we’d like it to be. Sometimes we stumble, sometimes we soar.



### **Eng. Baraka Blaise.**

MEP Site coordinator.

***“Greatest glory is not in never falling, but in rising everytime there is a fall. ”***

Don’t be afraid to take on new challenges and push your limits because past successes showcase abilities. So keep pushing yourself and stay motivated to achieve your goals!





**Eng. Semana Francois**  
Operations Manager

***"We make a living by what we get, but we make a life by what we give"***

Real winners in life are those who have mastered the art of giving without bankrupting themselves. So, roll the dice and see where life takes you, but don't forget to share the wealth along the way!



**Lydie Irababarira**  
Account Coordinator

***"We are continually faced by great opportunities brilliantly disguised as insoluble problems."***

Put on problem-solving-hats, embrace challenges and turn them into exciting opportunities for excellence. With a positive attitude and collaborative spirit, we can achieve greatness together.



**Eng. Pacifique Havugimana**  
Electrical Design Engineer

***"Believe in yourself and all that you are. Know that there is something inside you that is greater than any obstacle."***

Everyone has the potential to overcome challenges and achieve their goals. By believing in yourself and your abilities, you will always find the motivation to keep going even when faced with difficulties.





### **Rosine Uwamahoro**

MEP Cost estimator

***"Excellence is not a skill, it's an attitude."***

Living a life of commitment to delivering quality results and ensuring optimal value for commitment to accuracy and attention to detail is a testament to your attitude of excellence and that dedication to cultivating an attitude of excellence will serve as a hallmark of outstanding work.



### **Eng. Ahmed Adlan**

Lead Design Engineer

***"Without engineers, we would be living in a world that is unrecognizable to us today. We'd basically be cave people living in the wild."***

**Eng. Ahmed Adlan** is a Lead Design Engineer of certitude engineering Ltd, He has an extensive experience in MEP design from KHatib & Alami as Design Engineer where his main responsibility is to prepare Initial technical Specs, Design reports and scheme compliance with local codes and standards among others.







# OUR CLIENTS & PARTNERS







+ 250 788 303 997

certitude@cert-eng.com

www.cert-eng.com

KG 8 Ave, Plot 83, Bukinanyana,  
Gasabo, Kigali